



USER GUIDE

MX2515, MX2516, MX2517, MX2518, MX3015, MX3016, MX3017 & MX3018 High Temperature Explosion Relief Valves

Suitable for use on exhausts and silencers the MX2515, MX2516, MX2517, MX2518, MX3015, MX3016, MX3017 & MX3018 High Temperature Explosion Relief Valves are designed to relieve the build-up of pressure caused by an internal explosion. This guide is intended to help you install and maintain these valves and advise you of their design limits.

Manufacturer:

Pyropress Engineering
Bell Close, Newnham Industrial Estate, Plympton,
Plymouth
PL7 4JH
United Kingdom

Telephone: +44 (0)1752 333933
Fax: +44 (0)1752 336681
Website: www.pyropress.com
E-mail: sales@pyropress.com

Design Limits:

Explosion Relief Valves are to be fitted to enclosures. They can be mounted in any orientation. For high temperature use up to 540°C. (Contact Pyropress Sales for details on, opening pressure and design limits.)

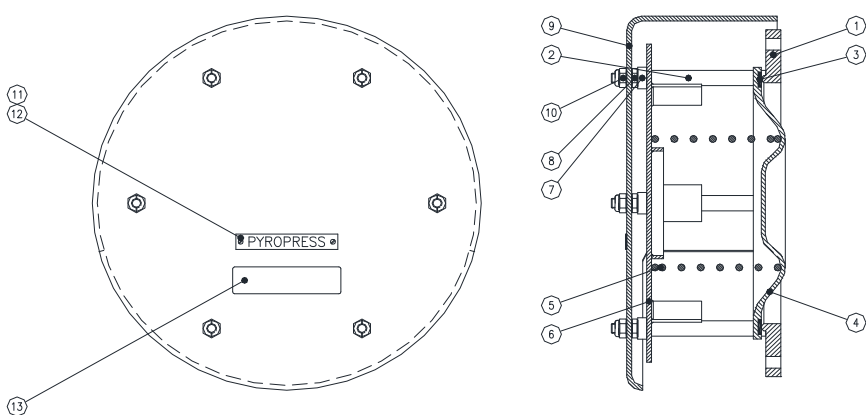
NOTE: It must be emphasized that the degree of protection provided by such valves in exhaust and silencer applications of a given volume depends on the number and size of the valves fitted and their relative location.

Operational Hazard:

The Valve Cover incorporates an aperture (150° for the MX2515, MX2516, MX2517 and MX2518, 120° for the MX3015, MX3016, MX3017 and MX3018) which serves to focus the stream of gases exiting the enclosure into a designated area. It can be positioned in 60° increments to best suit the end-user's particular requirements.

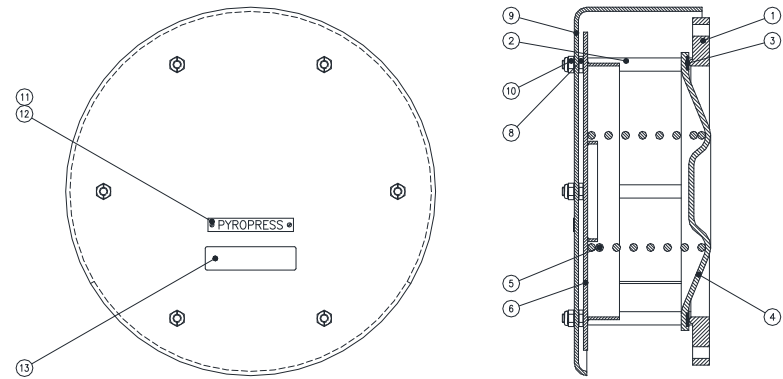
Sectional Arrangements:

MX2518 STANDARD VALVE



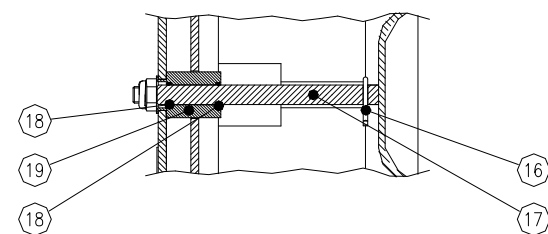
13	LABEL	1
12	PAN HEAD SCREW	2
11	LABEL	1
10	LOCKNUT	6
9	VALVE COVER	1
8	HALF NUT	6
7	BOSS	6
6	SPRING RETAINING PLATE	1
5	SPRING	1
4	VALVE DISC	1
3	SEALING RING	1
2	VALVE GUIDE	6
1	VALVE SEAT	1
REF	DESCRIPTION	QTY

MX3018 STANDARD VALVE



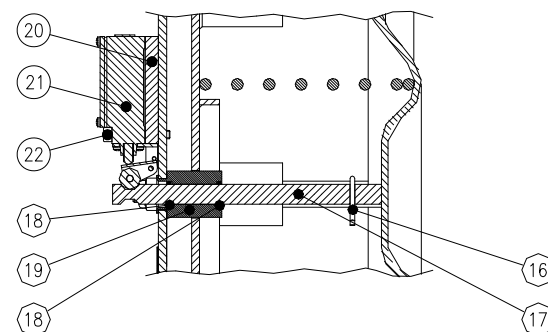
13	LABEL	1
12	PAN HEAD SCREW	2
11	LABEL	1
10	PHILIDAS NUT	6
9	VALVE COVER	1
8	HALF NUT	6
6	SPRING RETAINING PLATE	1
5	SPRING	1
4	VALVE DISC	1
3	SEALING RING	1
2	VALVE GUIDE	6
1	VALVE SEAT	1
REF	DESCRIPTION	QTY

MX2517 & MX3017 VALVE WITH MANUAL RESET INDICATOR



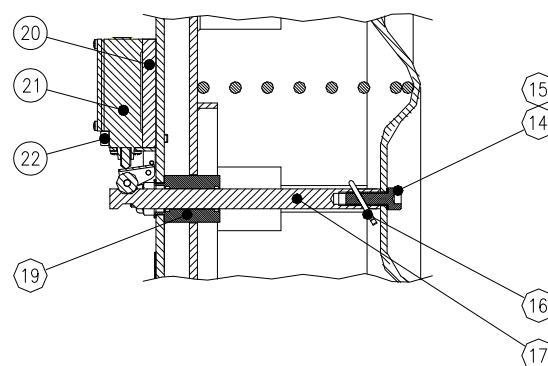
19	GUIDE BUSH	1
18	O-RING	2
17	INDICATOR	1
16	SPLIT PIN	1
REF	DESCRIPTION	QTY

MX2516 & MX3016 VALVE WITH MANUAL RESET INDICATOR AND SWITCH



22	SOCKET HEAD CAP SCREW	2
21	SWITCH	1
20	SWITCH MOUNTING PLATE	1
19	GUIDE BUSH	1
18	O-RING	2
17	INDICATOR	1
16	SPLIT PIN	1
REF	DESCRIPTION	QTY

MX2515 & MX3015 VALVE WITH AUTO RESET INDICATOR AND SWITCH



22	SOCKET HEAD CAP SCREW	2
21	SWITCH	1
20	SWITCH MOUNTING PLATE	1
19	GUIDE BUSH	1
17	INDICATOR	1
16	SPLIT PIN	1
15	CORRUSEAL GASKET	1
14	SOCKET HEAD CAP SCREW	1
REF	DESCRIPTION	QTY

Installation Instructions:

The diagrams below show both the arrangement and size of holes required for mounting and the contact area between the respective mating surfaces of the Valve Seat and the exhaust/silencer.

The manufacturer supplies valves fully assembled. To install them, follow the steps below:

1. Unscrew the self-lock nuts (item 10) and remove the Valve Cover (item 9); this will provide access to the mounting holes.
2. Position the Explosion Relief Valve against the exhaust/silencer, align the holes and secure with fasteners of appropriate specification.
3. Refit the Valve Cover (item 9) and secure with the self-locking nuts (item 10).

Maintenance Instructions:

Maintenance must only be undertaken by competent personnel. High Temperature Explosion Relief Valves should be visually inspected at regular intervals to ensure that they are properly secured to the exhaust/silencer.

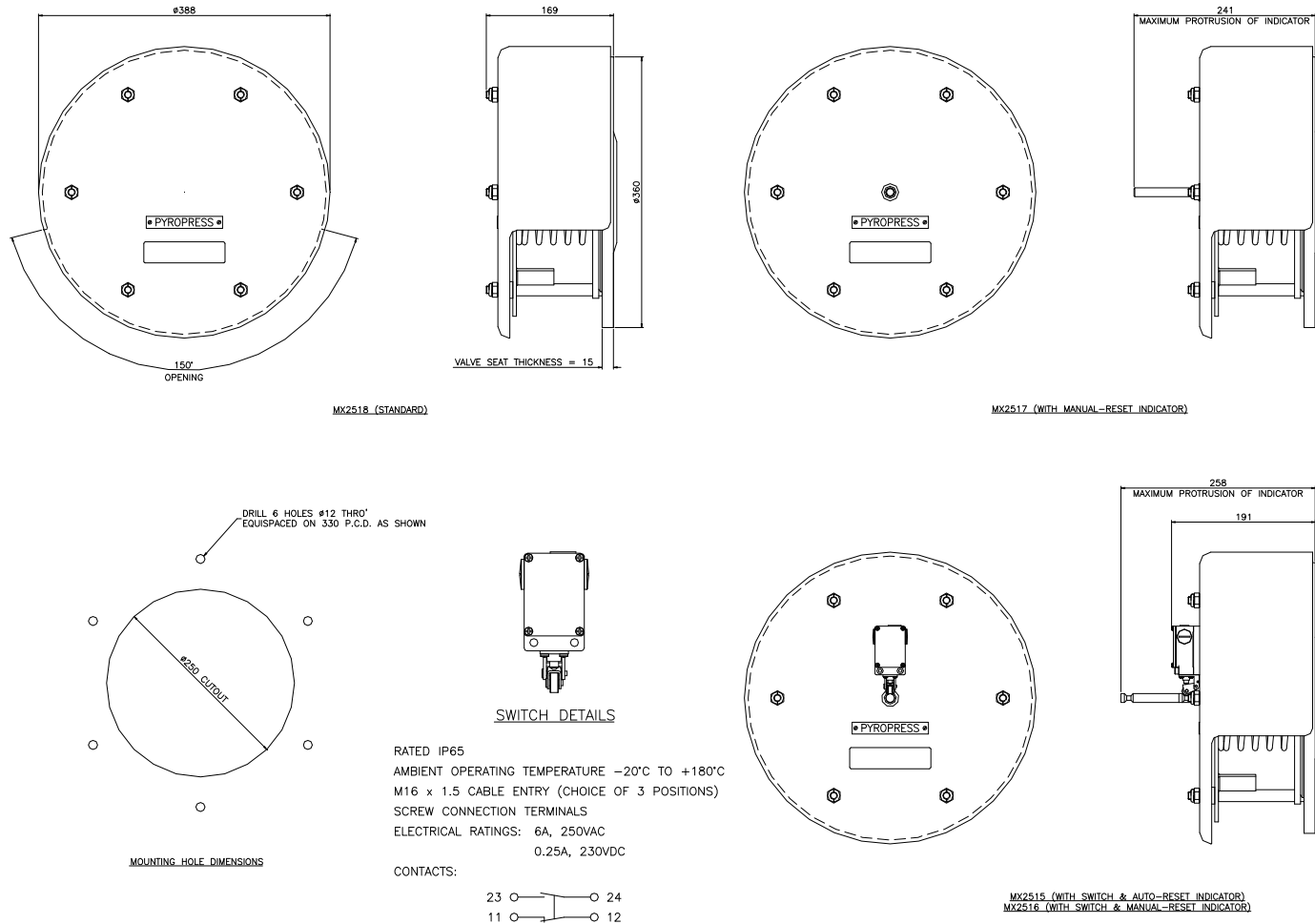
Following an explosion, valves should be removed (when safe to do so) and inspected. Any parts that have sustained damage should be replaced.

Spares:

Replacement parts are available upon request. When contacting the Sales Department, please state the designation or serial number of the valve, the description of the item or items in question and the quantity required.

General Arrangements:

MX2515, MX2516, MX2517 & MX2518



MX3015, MX3016, MX3017 & MX3018

